



2014 Coconut Grove Sailing Club Cup

Hosted by Coconut Grove Sailing Club
Event Headquarters at Miami Beach Marina

October 17 – 19, 2014

SAILING INSTRUCTIONS

The Organizing Authority (OA) is the International Melges 32 Class Association (IM32CA).

1. RULES

- 1.1. The regatta will be governed by the rules as defined in *The Racing Rules of Sailing* (RRS).
- 1.2. The 'class rules' for the purposes of the definition of 'rules' are the International Melges 32 Class Rules (IM32CR).
- 1.3. All boats must carry minimum equipment as required by the U.S. Coast Guard and the IM32CR.
- 1.4. The protest committee may impose suitable penalties, other than disqualification, for violations of the Class Rules, or other non-part 2 rules. This changes RRS 64.1(a).
- 1.5. The IM32CR Section H (Event Rules) will NOT apply. There will be no weigh-in of competitors, nor sail checks/measurement. This is an unsanctioned event.
- 1.6. Only the prescriptions of US SAILING to rules 67 and 76.1 as well as rule 61.4 and Appendix R shall apply. These prescriptions will be posted on the regatta website.
- 1.7. RRS 42.3(c) is changed to allow the spinnaker sheet to be trimmed without restriction.

2. NOTICES TO COMPETITORS

- 2.1. Notices to competitors will be posted on the Official Notice Board located at the Miami Beach Marina (MBM) Regatta Tent south of E Dock.
- 2.2. The Race Committee intends to utilize VHF Channel 73 for the purposes of disseminating pertinent race information (including individual recall identifications). Failure of a boat to receive these communications shall not be grounds for redress. This changes rule 62.1(a).

3. CHANGES TO SAILING INSTRUCTIONS

- 3.1. Any change to the Sailing Instructions will be posted before 0830 on the day it will take effect, except that any change to the schedule of races will be posted by 2000 on the day before it will take effect.

4. SIGNALS MADE ASHORE

- 4.1. Signals made ashore will be provided orally.

5. SCHEDULE

- 5.1. The schedule for the event is as follows:

Wednesday, 15 October

1500 – 1800 Registration/Check-in/Waiver drop off (Miami Beach Marina)

Thursday, 16 October

0900 – 1030 Registration/Check-in/Waiver drop off (Miami Beach Marina)

Friday, 17 October- RACE DAY ONE

0845 Skippers' Meeting (Miami Beach Marina)
1100 Initial Warning Signal

Saturday, 18 October- RACE DAY TWO

1100 Initial Warning Signal

Sunday, 19 October- RACE DAY THREE

1100 Initial Warning Signal
1430 No initial Warning Signal will be made after this time
Après Racing Awards (Miami Beach Marina)

5.2. Eight (8) Races are scheduled.

5.3. The RC may conduct as many as 3 races each day.

5.4. The OA and/or the RC reserve the right to modify the program due to weather conditions or other causes.

6. CLASS FLAGS

6.1. The Class flag will be the M32 class insignia in blue on a white background or Numeral Pennant #1.

7. RACING AREAS

The racing area for a given day will be chosen from the locations provided in Attachment A. The Race Committee will announce via VHF prior to departing the dock.

8. THE COURSES

8.1. No later than the Warning Signal, the Race Committee will display the course, approximate compass bearing, and distance to Mark 1. Failure to broadcast or to receive this notification shall not constitute grounds for redress. This changes 62.1(a).

8.2. The information will be arranged vertically.

Example:

4		<i>Course</i>
300		<i>Approximate bearing to Mark 1 (magnetic)</i>
1.5		<i>Approximate distance to Mark 1 (nautical miles)</i>

Course 4: (4 Legs) Start – 1 – 1a – Gate – 1 – 1a – Finish (Downwind)

Course 5: (5 Legs) Start – 1 – 1a – Gate – 1 – 1a – Gate – Finish (Upwind)

8.3. Marks 1 and 1a shall be rounded to port. Mark 1a is an offset mark and will be positioned to port of Mark 1 (looking upwind).

8.4. If only one Gate mark is set, boats shall round the single mark to port.

8.5. Except when there is a change of course, the Gate will be positioned to windward of the RC Signal Boat and may be laid after the starting signal.

8.6. Except for when there is a change of course:

- The finish for course 4 will be to leeward of the Gate
- The finish for course 5 will be in the approximate position of Mark 1.

9. MARKS

9.1. The original marks of the course will be orange inflatable marks.

9.2. In the event of a change of course, change marks will be yellow inflatable marks.

10. THE START

10.1. The starting line will be between a staff displaying an orange flag on the Race Committee Signal Boat and a staff displaying an orange flag on a port end Line Boat. In the event that the port end Line Boat is not on station, it will be replaced by a yellow starting mark and the starting line will be between the staff on the Race Committee Signal Boat and the course side of said mark.

11. CHANGE OF THE NEXT LEG OF THE COURSE

11.1. To change the next leg of the course, the race committee will lay a new mark (or move the finishing line) and remove the original mark as soon as practicable. When in a subsequent change a new mark is replaced, it will be replaced by an original mark.

12. THE FINISH

12.1. For downwind finishes, the finishing line will be on the opposite side of the Race Committee Signal Boat from the starting line. The finishing line will be between a staff displaying an orange flag on a Race Committee Boat and the course side of a nearby yellow inflatable mark.

12.2. For windward finishes, the finishing line will be between a staff displaying an orange flag on a Race Committee Boat and the course side of a nearby yellow inflatable mark to port of said Committee Boat.

12.3. Flag A displayed, with no sound, while boats are finishing means "no more racing today."

13. PENALTY SYSTEM

13.1. IM32CR H.4.1 (a) shall apply as modified herein:

The first two sentences of rule 44.1 are changed to read as follows: "A boat may take a One-Turn Penalty when she may have broken a rule of Part 2 or rule 31 while racing. However, when she may have broken a rule of Part 2 while in the zone of a rounding or finishing mark, her penalty shall be a Two-Turns Penalty."

13.2. Unless the course is shortened to finish at the windward mark, penalties within 3 boat lengths of the windward mark or on the offset leg may be delayed and taken as soon as possible on the downwind leg.

14. TARGET TIMES AND TIME LIMIT

14.1. The target time for each race is between 50 and 70 minutes. Failure to meet the target time shall not be grounds for redress. This changes rule 62.1(a).

14.2. The time limit for the first boat to sail the course and finish in accordance with rule 28 shall be 120 minutes. Boats still racing more than 30 minutes after the first boat sails the course and finishes will be scored DNF without a hearing. This changes rules 35 and A5.

15. PROTESTS AND REQUESTS FOR REDRESS

15.1. Boats intending to protest are highly encouraged to communicate their intentions with the Race Committee via VHF at the conclusion of the race to which the protest will apply.

15.2. Protest forms are available at the Regatta Tent south of E Dock. Protests and requests for redress or reopening shall be delivered there within the appropriate time limit.

15.3. The protest time limit is 60 minutes after the RC signal boat docks at MBM. The docking time will be posted on the Official Notice Board. Hearings will commence as soon as practicable.

15.4. Breaches of instructions 17 and 23 will not be grounds for a protest by a boat. This changes rule 60.1(a).

Penalties for these breaches may be less than disqualification if the protest committee so decides. The scoring abbreviation for a discretionary penalty imposed under this instruction will be "DPI."

15.5. On the last scheduled day of racing a request for reopening a hearing shall be delivered:

- Within the protest time limit if the requesting party was informed of the decision on the previous day and;
- No later than 30 minutes after the requesting party was informed of the decision on that day. This changes rule 66.

15.6. On the last scheduled day of racing a request for redress based on a protest committee decision shall be delivered no later than 30 minutes after the decision was posted. This changes rule 62.2.

15.7. In the case of a protest, the representative from each yacht that attends the protest in the protest room shall be the owner or the Group 1 driver. Group 3 sailors from the boat protesting or the boat being protested are not allowed in the protest room or to be in contact with the representative in the protest room. Group 3 sailors from other boats may be allowed in the protest room as a witness.

15.8. The Race Committee will post a list of boats that have been given starting penalties or other Race Committee Actions. If this list is posted prior to the filing deadline, requests for redress based on this posting shall be filed no later than 30 minutes after the protest time limit. This changes rule 62.2.

16. SCORING

16.1. The Low Point Scoring System of RRS Appendix A will apply, with the following modifications:

- Three races are required to be completed to constitute a series.
- When fewer than six races have been completed, a boat's series score will be the total of her race scores.

- When six or more races have been completed, a boat's series score will be the total of her race scores excluding her worst score.

This changes rule A2.

17. SAFETY REGULATIONS

17.1. A boat that retires from a race or leaves the racing area between races shall notify the Race Committee as soon as practicable.

18. REPLACEMENT OF CREW OR EQUIPMENT

18.1. Due to the informal nature of the event, boats will be permitted to change crew and equipment as necessary.

19. EQUIPMENT AND MEASUREMENT CHECKS

19.1. A boat or equipment may be inspected at any time for compliance with the class rules and Sailing Instructions.

20. SUPPORT BOATS

20.1. Due to the informal nature of the event, restrictions on Support Boats as described in International Melges 32 Class Rule H.5 OUTSIDE ASSISTANCE, shall NOT apply. Support Boats, while permitted to interact with competitors, are reminded to be mindful of their wakes and position relative to all competitors.

20.2. Support Boats shall follow any directions given to them by the Race Committee.

21. PRIZES

21.1. A trophy will be presented to the first place finishing boat.

22. CAMERAS & ELECTRONIC EQUIPMENT

22.1. Boats may be required to carry cameras, sound equipment or positioning equipment as provided and specified by the OA.

23. COMPETITOR CONDUCT

23.1. All owners are responsible for their crew's conduct and shall at all times exemplify the MELGES 32 CLASS MISSION STATEMENT and CODE OF CONDUCT. Failure to do so may be grounds for disqualification.

24. WIND SPEEDS

24.1. Races will not be started when the race committee deems that winds are consistently at or above 25 knots or gusting to 28 knots and above. If a race has been started and the wind increases to 25 knots and above, it remains at the discretion of the race committee whether or not to abandon the race. Races will not be started unless winds are consistently above 5 knots at the time of the start.

25. FURTHER INFORMATION

25.1. For further information please contact:

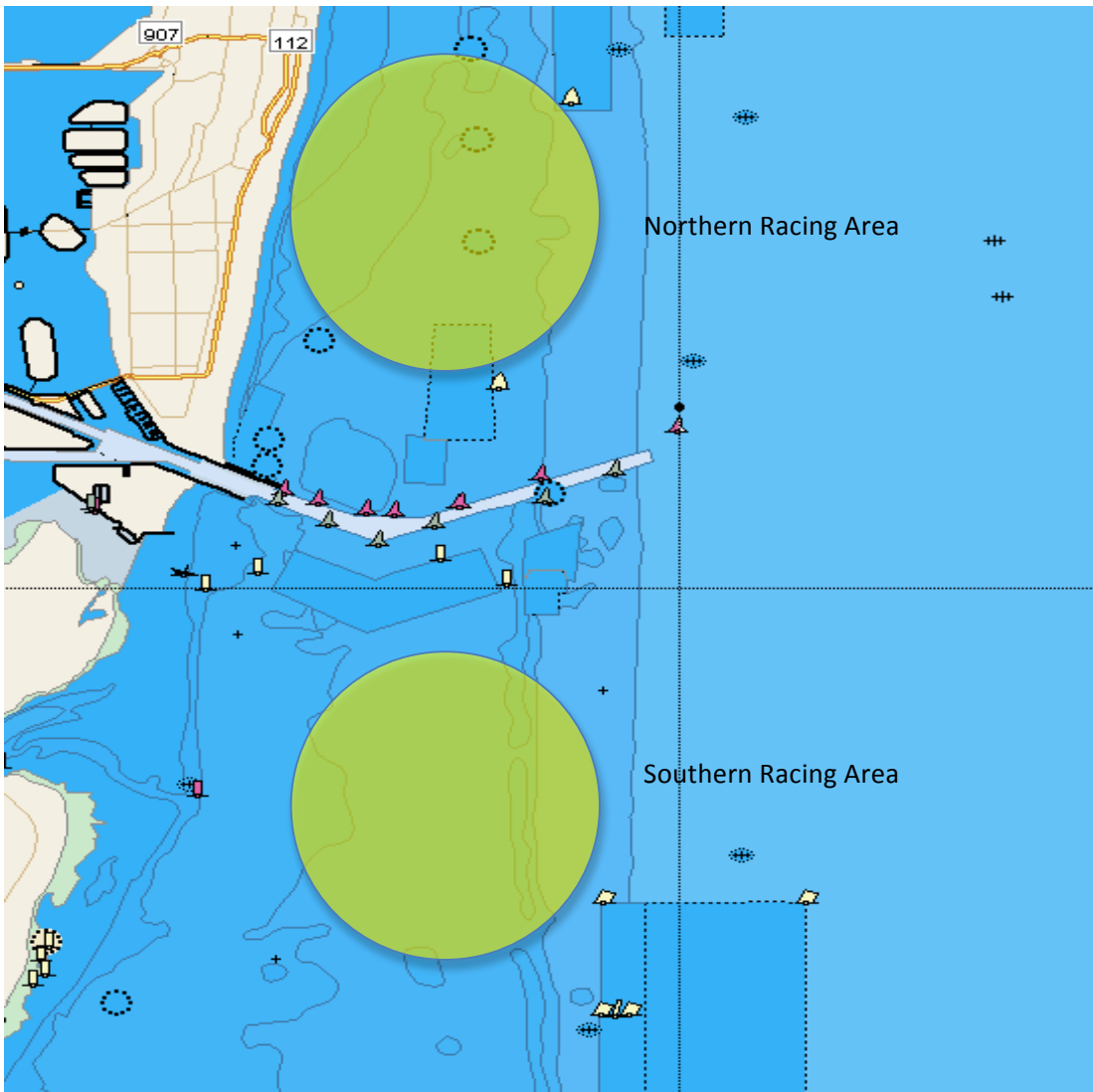
Joy Dunigan- International Class Administrator // +1.912.398.5776 // classadmin@melges32.com

Anderson Reggio- Principal Race Officer // +1.267.304.1873 // andersonreggio@gmail.com

Ron Rostorfer- Coconut Grove Sailing Club Regatta Chair

ATTACHMENT A

VENUE- Racing Areas



Not to be used for navigation